

# INSTRUCTION MANUAL

Model: 2SK7



**KALAMAZOO  
INDUSTRIES, INC.**

6856 East K Avenue

Kalamazoo, MI 49048

269-382-2050 PH

269-382-0790 FAX

[www.kalamazooindustries.com](http://www.kalamazooindustries.com)

CE

1SM M8-02



1. Install tube/bracket  
Open slot in bracket  
with screw driver to  
allow yoke to fit over  
adaptor.



2.

Install Pulley.  
Bushings is behind pulley.

3. Install  
Idler pulley.



4. Install  
Belt.  
Compress  
Spring.



5. Install guard, Platen.



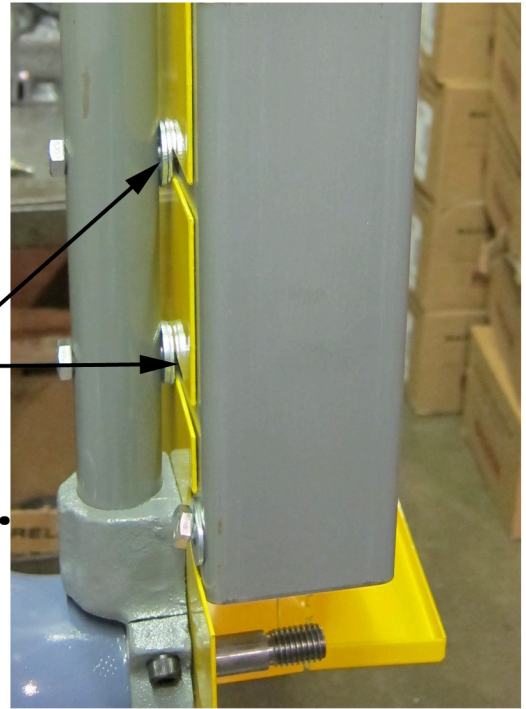
6. Use arm to compress  
spring to change belt.

# 2SK7 Boxed OSHA Guard Installation

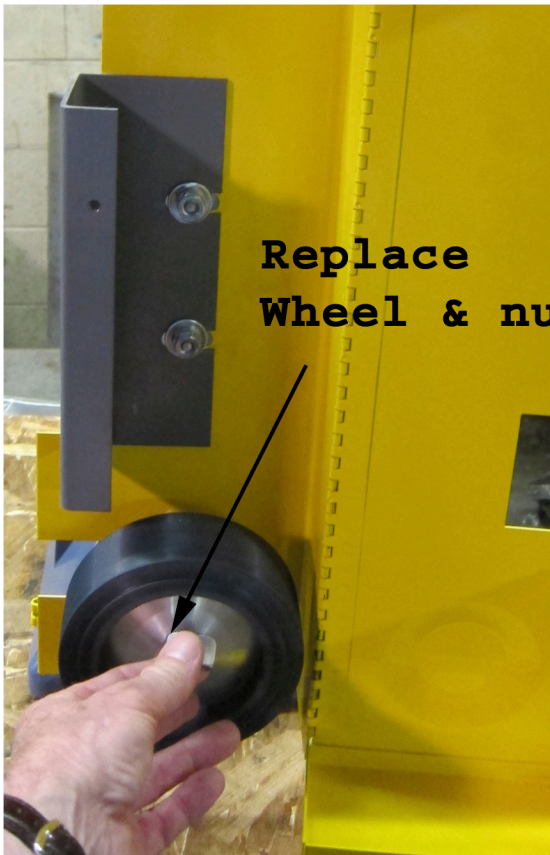
Replace step bushing with straight bushing.



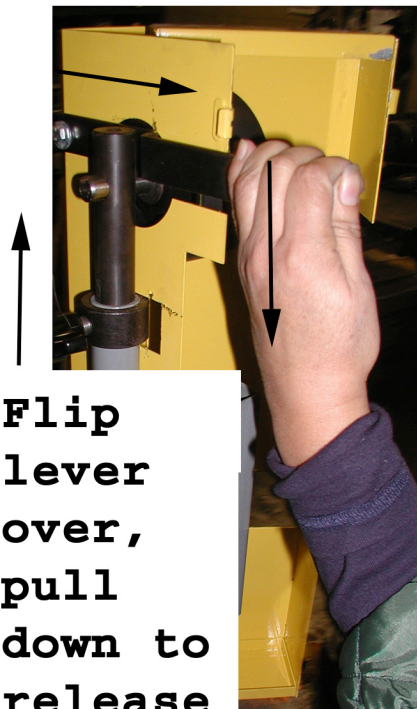
Add 2 washers for spacers.



Replace Wheel & nut.

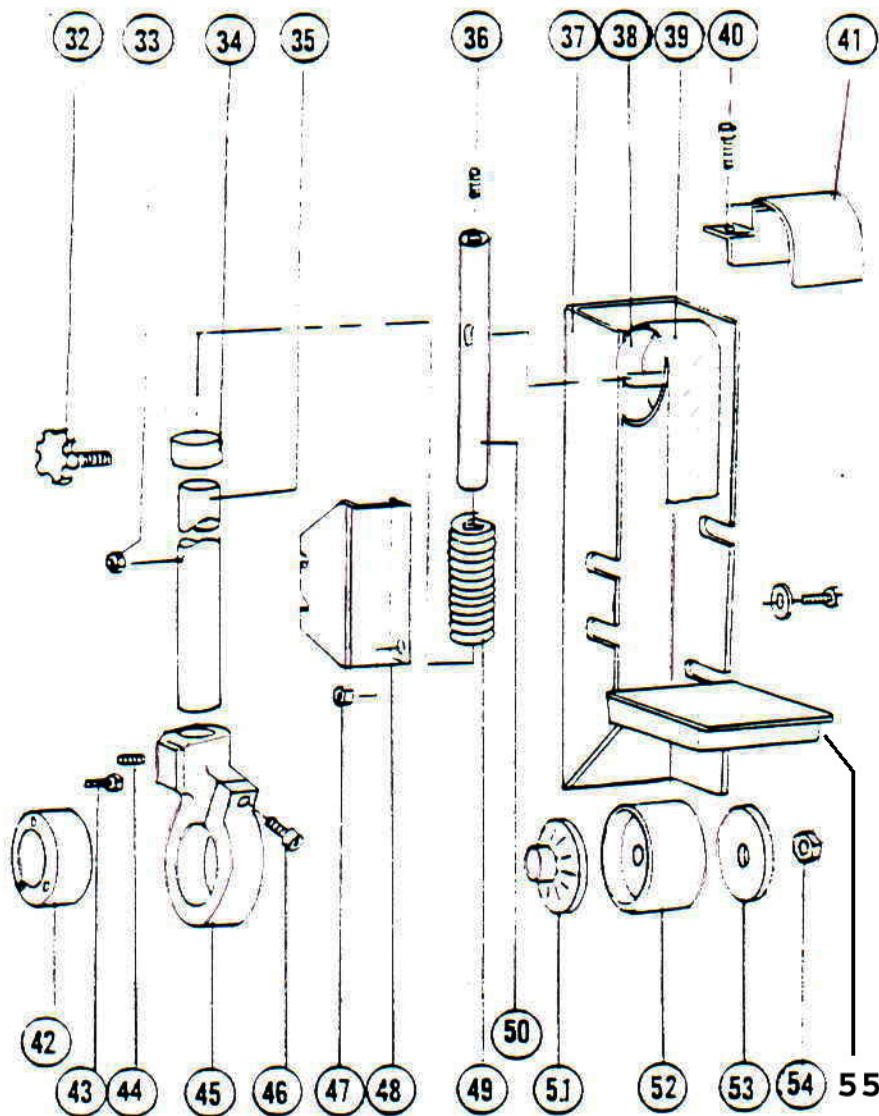


Flip lever over, pull down to release Belt tension.



# KI KALAMAZOO INDUSTRIES, INC.

6856 East K Avenue - Kalamazoo, MI 49048-6042  
 Phone 269-382-2050 Fax 269-382-0790  
 www.kalamazooindustries.com



Parts List For 2SK7 and S2 Sander Kit

<u>Item Number</u>	<u>Description</u>	<u>Part Number</u>	<u>Item Number</u>	<u>Description</u>	<u>Part Number</u>
32	Tracking Knob	441-011	44	Set Screw	$\frac{1}{2}$ 20 X $\frac{1}{2}$
33	Bolt & Nut	$\frac{1}{2}$ 20 X 2	45	Bracket	041-010
34	Collar	123-004	46	Bolt	$\frac{5}{16}$ X 18 X $\frac{1}{2}$
35	Tube Support	829-003	47	Nut	$\frac{1}{2}$ 20 nut
36	Set Screw	$\frac{3}{8}$ 16 X $\frac{1}{4}$	48	Platen	550-006
37	Guard	342-018	49	Spring	697-013
38	Upper Wheel	936-003S	50	Tension Rod	645-008
39	Belt	2 X 48	51	Flange (tight)	292-010
40	Bolt	$\frac{3}{8}$ 16 X 1 $\frac{1}{4}$	52	Drive Pulley	936-008
41	Guard	342-009	53	Flange (loose)	292-009
42	Adaptor Ring	123-005	54	Nut	$\frac{5}{8}$ X 18
43	Bolt	10-24 X $\frac{3}{4}$	55	Work Table	829-004

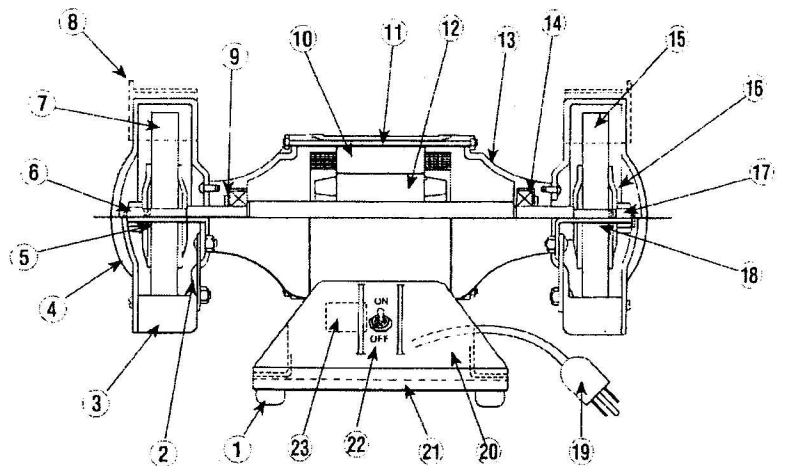


6856 East K Avenue  
Kalamazoo, MI 49048  
269-382-2050 PH  
269-382-0790 FAX  
[www.kalamazooindustries.com](http://www.kalamazooindustries.com)

## ASSEMBLY INSTRUCTIONS 2SK7 SANDER/GRINDER

1. Remove 5/8" jam nut from end of shaft and install tube assembly (041-010) on ring (123-005). Carefully jam screwdriver into slot of part (041-010) to expand, so it will slide on ring. Make sure the plastic tracking knob is facing inside, or towards left grinding wheel. Tighten socket screw in ring so tube is upright.
2. Install rubber contact wheel (936-008) on spindle, tighten jam nut.
3. Drop upper wheel assembly into tube. Be sure spring is in the tube under the wheel assembly for spring tension. Make sure tracking knob (441-011) end is in the slot of part (645-008).
4. Depress upper wheel assembly and install abrasive belt. Be sure arrows on inside of belt are facing down inside of the front (front side).
5. Install platen (550-006) on upright tube. Do not tighten.
6. Install belt guard on the same bolts as the platen. Square up the guard and have platen parallel behind the belt. Tighten bolts.
7. Install work table. Tighten with 5/16" 18 hex head bolt.
8. Install top belt guard (342-009).
  - Keep work table not more than 1/8" from belt.
  - Always wear safety glasses when operating this machine.

# Baldor 6" & 7" Grinders 1/4 Hp & 1/3 Hp Buffers



Item #	Part Description	Part Number 6"	List Price	Part Number 7"	List Price
1	Rubber Feet	RM1005A01SP	\$2	RM1005A01SP	\$2
* 2	Tool Rest Support, Pressed Steel	HA6048A01SP	8	HA6048A01SP	8
* 2A	Tool Rest Support, Cast Iron	HA6064A01SP	19	HA6064A01SP	19
~ 3	Guard, Non-Exhaust Type (Right Hand or Left Hand)	G6FH38C0SP	23	G7FH3800SP	33
* 3A	Guard, Exhaust Type (Right Hand) Cast Iron	G6FH1802A01	51	G7FH1802A01SP	86
~ 3B	Guard, Exhaust Type (Left Hand) Cast Iron	G6FH1800A01(SP)	51	G7FH1900A01SP	86
* 4	Guard Cover, Non-Exhaust Type (Right Hand or Left Hand)	G6FH3801SP	26	G7FH3801SP	42
~ 4A	Guard Cover, Exhaust Type (Right Hand) Cast Iron	G6FH1803A01SP	41	G7FH1803A01SP	50
* 4B	Guard Cover, Exhaust Type (Left Hand) Cast Iron	G6FH1801A01SP	41	G7FH1801A01SP	50
~ 5	Tool Rest, Pressed Steel (Right Hand or Left Hand)	G6AP1009A01SP	11	G7AP1010A01SP	14
* 5A	Tool Rest, Cast Iron, (Right Hand or Left Hand)	G6AP1008A01SP	32	G6AP1008A01SP	32
6	Arbor Nut (Left Hand)	XY5020A62SP (1/2-20)	5	XY6311A62SP (5/8-11)	5
* 7	Grinding Wheel	B66	27	B73	38
~ 8	Spark Arrestor, Solid Type (use with non-exhaust wheel guards)	G6AP1003A01SP	11	G6AP1003A01SP	11
* 8A	Spark Arrestor, Sintered Type (use with exhaust wheel guards)	G6AP1002A01SP	14	G6AP1002A01SP	14
9	Felt Washer	HA1025A01TSP	5	HA1025A02 (C)	3
10	Wound Stator Assembly	Specify Spec. No. (C)	-	Specify Spec. No. (C)	-
11	Thru Bolt	HA3100A07 (C)	5	HA3100A11 (C)	5
12	Rotor, with Shaft & Bearings	Specify Spec. No.	-	Specify Spec. No.	-
13	Endplate (Right Hand or Left Hand)	G6EP3900A01 (C)	32	G7EP3900A01 (C)	41
14	Bearing	BG6203EC3SP	28	BG6203C03 (C)	25
* 15	Grinding Wheel	B67	27	B74	38
16	Wheel Flange, Inside or Outside, Pressed Steel	HA6113SP	7	HA6115A01SP	7
16A	Wheel Flange, Inside or Outside, Cast	HA6050AC2SP	11	HA6096A01SP	14
17	Arbor Nut (Right Hand)	XY5020A12SP (1/2-20)	4	XY6311A12 SP (5/8-11)	5
* 18	Tool Rest, Pressed Steel (Right Hand or Left Hand)	G6AP1009A01SP	17	G7AP1010A01SP	17
* 18A	Tool Rest, Cast Iron (Right Hand or Left Hand)	G6AP1008A01SP	32	G6AP1008A01SP	32
19	Cord and Plug	LD5001A07 (C)	26	LD5001A07 (C)	26
20	Base	G6BA3000SP	39	G7BA3000 (C)	51
21	Base Cover	G6CB4500A01 (C)	10	G7CB4500 (C)	14
22	Switch On - Off (Single Phase)	SP9017SP	15	SP9000 SP	26
22A	Switch On - Off (Three Phase)	None	-	SP9004 (C)	31
23	Relay	RE102CSP	25	None	-
N/S	Capacitor	Specify Spec. No.	-	Specify Spec. No.	-
**	N/S Vinyl Cap	RM1010AC4	2	None	-
N/S	Spacers for Wire Brush Wheels	(3 Req'd) HW-000A50 (C)	3	(2 Req'd.) HA2047A01 (C)	5
N/S	Spacer, Flange (for non-exhaust type)	None	-	HA2072 (C)	8
N/S	Spacer, Flange (for exhaust type)	None	-	HA2040A01SP	8

**NOTES:**

\*Grinders only.

\*\*Buffers only.

N/S - Not shown on diagram.

Instruction Sheet for 6" thru 14" Grinders - MN903 - #275P is available at no charge.

Instruction Sheet for Buffers - MN906 - #280F is available at no charge.

Instruction Sheet for Grinder-Buffers - MN907 - #285B is available at no charge.

## **WARRANTY**

All products are guaranteed for a period of one year to the original purchaser, against defects in material workmanship under normal use. Electric motors are warranted by the motor manufacturer and will be repaired by the nearest motor repair station. If non-repairable, they will be replaced by Kalamazoo Industries. Please call for instructions 269-382-2050.

## **RETURN POLICY**

Authorization must be obtained before returning merchandise. Please call our customer service department for a return authorization number at 269-382-2050. Please include with your return a copy of your invoice or packing slip. Materials must be sent back prepaid. (Unless otherwise indicated). All returns will be subject to a 10% restocking charge. No returns will be accepted after one year of invoice date.

## **BELT SANDER SAFETY**

- READ THE OPERATING INSTRUCTIONS BEFORE RUNNING MACHINE.
- ALWAYS WEAR SAFETY GLASSES OR A FULL FACE SHIELD FOR PROTECTION.
- KEEPS HANDS CLEAR OF THE SANDING AREA.
- NEVER WEAR GLOVES OR LOOSE FITTING CLOTHES WHEN OPERATING THIS MACHINE.
- ALWAYS KEEP HAIR TIED BACK OR COVERED.
- LET MACHINE ROTATION COME TO A FULL STOP BEFORE CHANGING BELT.
- KEEP SAFETY GUARDS IN PLACE. DO NOT ALTER GUARDS OR MACHINE IN ANY WAY. ANY ALTERATIONS TO GUARDS OR MACHINE COULD CAUSE SERIOUS INJURY.
- ALL BELT SANDERS SHOULD BE OPERATED IN A WELL-VENTILATED AREA. THE DUST CREATED WHEN SOME MATERIALS ARE SANDED CAN BE HARMFUL. DUST MASKS ARE RECOMMENDED AS A PRACTICAL MEANS OF MINIMIZING DUST INHALATION. FUMES FROM OTHER SOURCES CAN ALSO CAUSE FIRES WHEN IN CONTACT WITH SANDING SPARKS.
- SPARKS CREATED BY SANDING SHOULD BE DIRECTED DOWNWARD AND AWAY FROM THE FACE AND BODY. DO NOT GRIND NEAR FLAMMABLE MATERIAL.
- ELECTRIC SANDING MACHINES ARE NOT INTENDED FOR USE IN OR NEAR WATER. THIS INCLUDES AN OPERATOR STANDING ON A WET FLOOR OR WORKING AROUND CONTAINERS OF WATER OR OTHER CONDUCTIVE LIQUIDS.

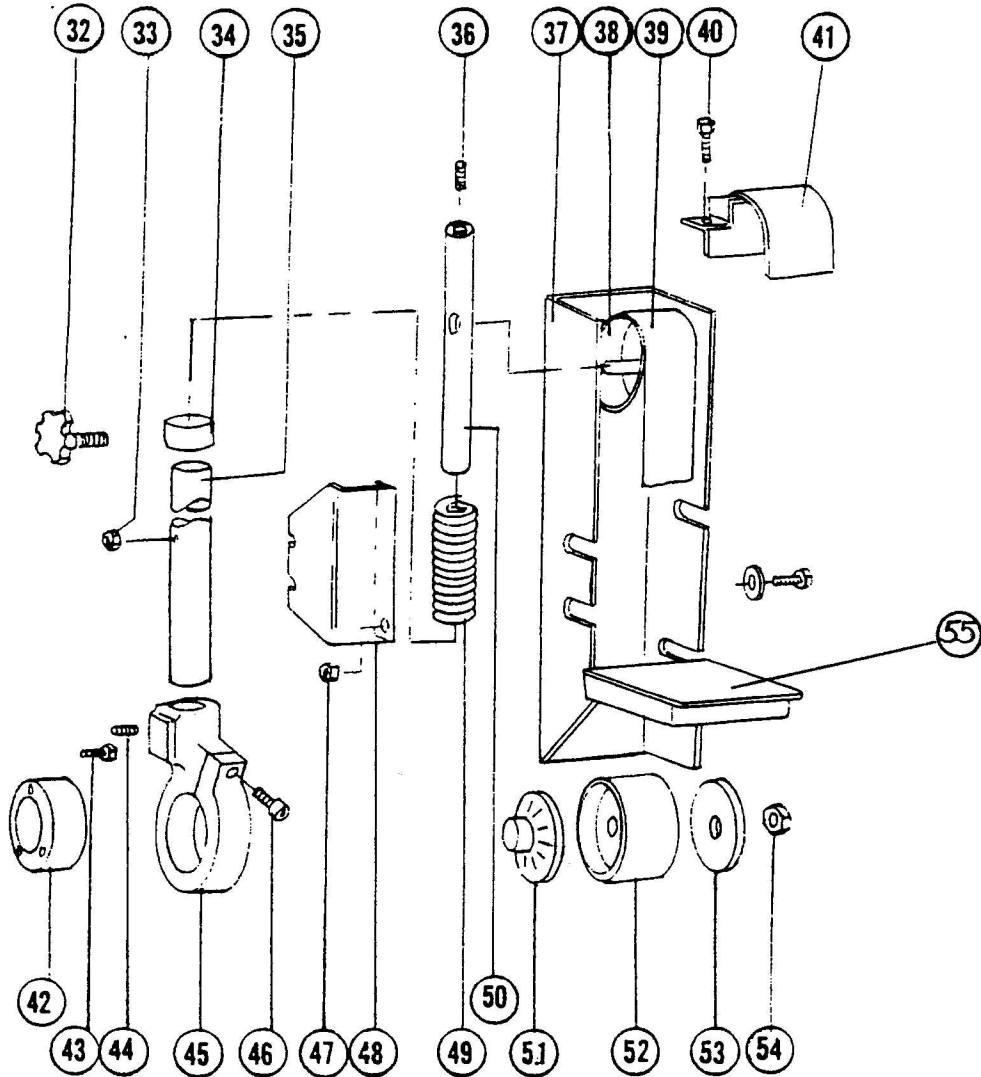
**KALAMAZOO INDUSTRIES, INC.**  
6856 East K Avenue  
Kalamazoo, MI 49048  
269-382-2050 PH  
269-382-0790 FAX  
[www.kalamazooindustries.com](http://www.kalamazooindustries.com)



Made in USA

# KI KALAMAZOO INDUSTRIES, INC.

6856 East K Avenue - Kalamazoo, MI 49048-6042  
 Phone 269-382-2050 Fax 269-382-0790  
 www.kalamazooindustries.com



## PARTS LIST FOR 2SK7 AND S2 SANDER KIT

NO.	PART NO.	DESCRIPTION	NO.	PART NO.	DESCRIPTION
32	441-011	TRACKING KNOB	44		1/4X20-1/4 SET SCREW
33		1/4X20-2 BOLT & NUT	45	041-010	TUBE BRACKET
34	123-004	COLLAR	46		5/16X18X1 BOLT
35	829-003	TUBE SUPPORT	47		1/4X20 NUT
36		3/8X16-1/4 SET SCREW	48	550-006	PLATEN
37	342-018	SIDE OSHA GUARD	49	697-013	TENSION SPRING
38	936-003	IDLER PULLEY	50	645-008	TENSION ROD
39		2X48 SANDING BELT	51	292-010	TIGHT FLANGE
40		3/8X16X1-1/4 BOLT	52	936-008	DRIVE PULLEY
41	342-009	UMBRELLA GUARD	53	292-009	LOOSE FLANGE
42	123-005	ADAPTOR RING	54		5/8 X18 NUT
43		10X24X1 BOLT	55	829-004	WORK TABLE