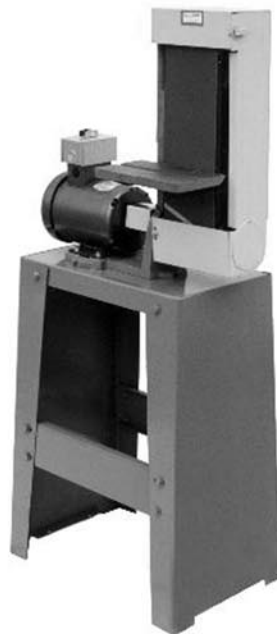


INSTRUCTION MANUAL

MODEL NO. S6, S6M & S6MS SANDER



**KALAMAZOO
INDUSTRIES, INC.**

6856 East K Avenue
Kalamazoo, MI 49048
269-382-2050 PH
269-382-0790 FAX
www.kalamazooindustries.com

WARRANTY

All products are guaranteed for a period of one year to the original purchaser, against defects in material workmanship under normal use. Electric motors are warranted by the motor manufacturer and will be repaired by the nearest motor repair station. If non-repairable, they will be replaced by Kalamazoo Industries. Please call for instructions 616-382-2050.

RETURN POLICY

Authorization must be obtained before returning merchandise. Please call our customer service department for a return authorization number at 616-382-2050. Please include with your return a copy of your invoice or packing slip. Materials must be sent back prepaid. (Unless otherwise indicated). All returns will be subject to a 10% restocking charge. No returns will be accepted after one year of invoice date.

BELT SANDER SAFETY

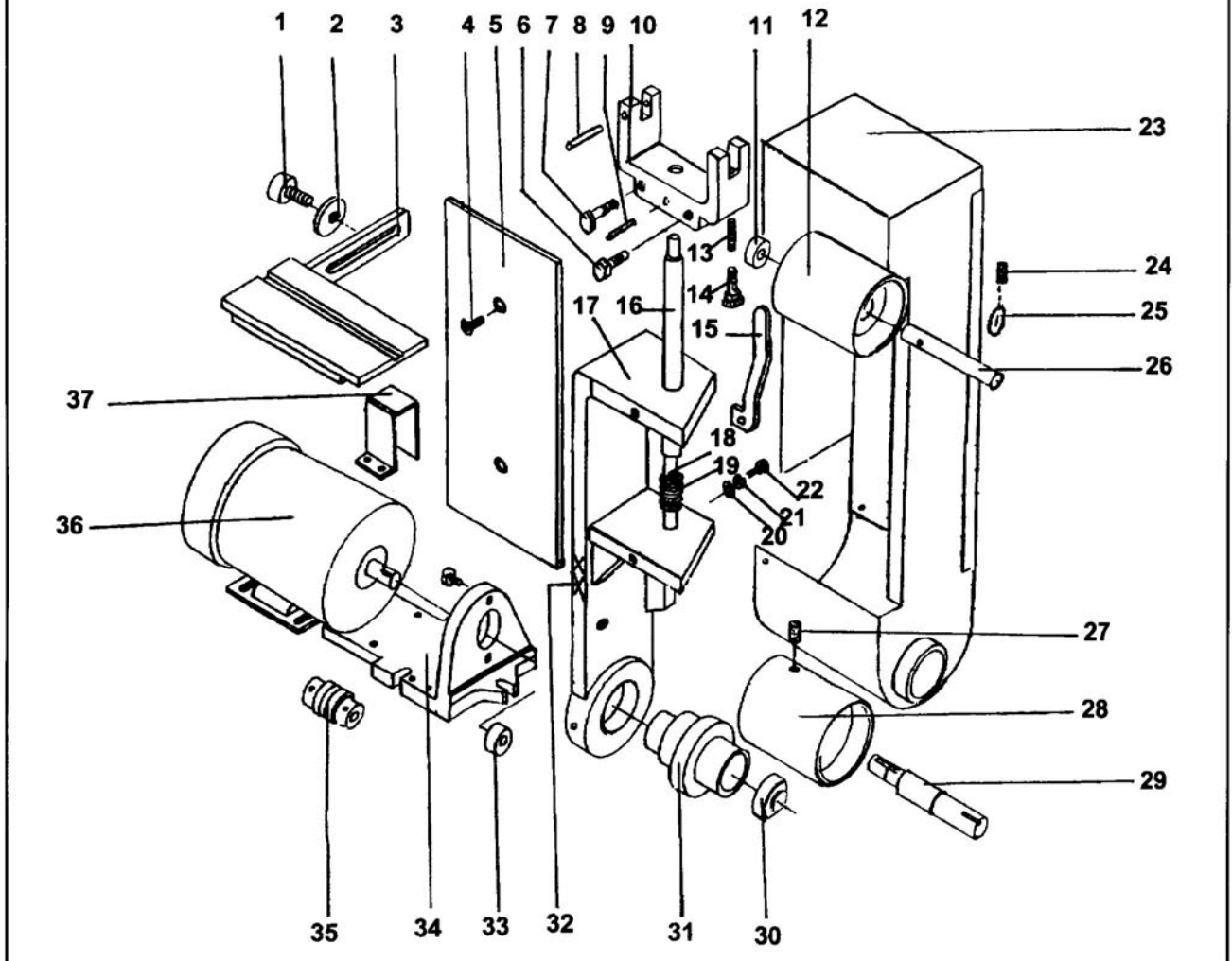
- * READ THE OPERATING INSTRUCTIONS BEFORE RUNNING MACHINE.
- * ALWAYS WEAR SAFETY GLASSES OR A FULL FACE SHIELD FOR PROTECTION.
- * KEEPS HANDS CLEAR OF THE SANDING AREA.
- * NEVER WEAR GLOVES OR LOOSE FITTING CLOTHES WHEN OPERATING THIS MACHINE.
- * ALWAYS KEEP HAIR TIED BACK OR COVERED.
- * LET MACHINE ROTATION COME TO A FULL STOP BEFORE CHANGING BELT.
- * KEEP SAFETY GUARDS IN PLACE. DO NOT ALTER GUARDS OR MACHINE IN ANY WAY. ANY ALTERATIONS TO GUARDS OR MACHINE COULD CAUSE SERIOUS INJURY.
- * ALL BELT SANDERS SHOULD BE OPERATED IN A WELL-VENTILATED AREA. THE DUST CREATED WHEN SOME MATERIALS ARE SANDED CAN BE HARMFUL. DUST MASKS ARE RECOMMENDED AS A PRACTICAL MEANS OF MINIMIZING DUST INHALATION. FUMES FROM OTHER SOURCES CAN ALSO CAUSE FIRES WHEN IN CONTACT WITH SANDING SPARKS.
- * SPARKS CREATED BY SANDING SHOULD BE DIRECTED DOWNWARD AND AWAY FROM THE FACE AND BODY. DO NOT GRIND NEAR FLAMMABLE MATERIAL.
- * ELECTRIC SANDING MACHINES ARE NOT INTENDED FOR USE IN OR NEAR WATER. THIS INCLUDES AN OPERATOR STANDING ON A WET FLOOR OR WORKING AROUND CONTAINERS OF WATER OR OTHER CONDUCTIVE LIQUIDS.

KALAMAZOO INDUSTRIES, INC.
6856 East K Avenue
Kalamazoo, MI 49048
269-382-2050 PH
269-382-0790 FAX
www.kalamazooindustries.com



Made in USA

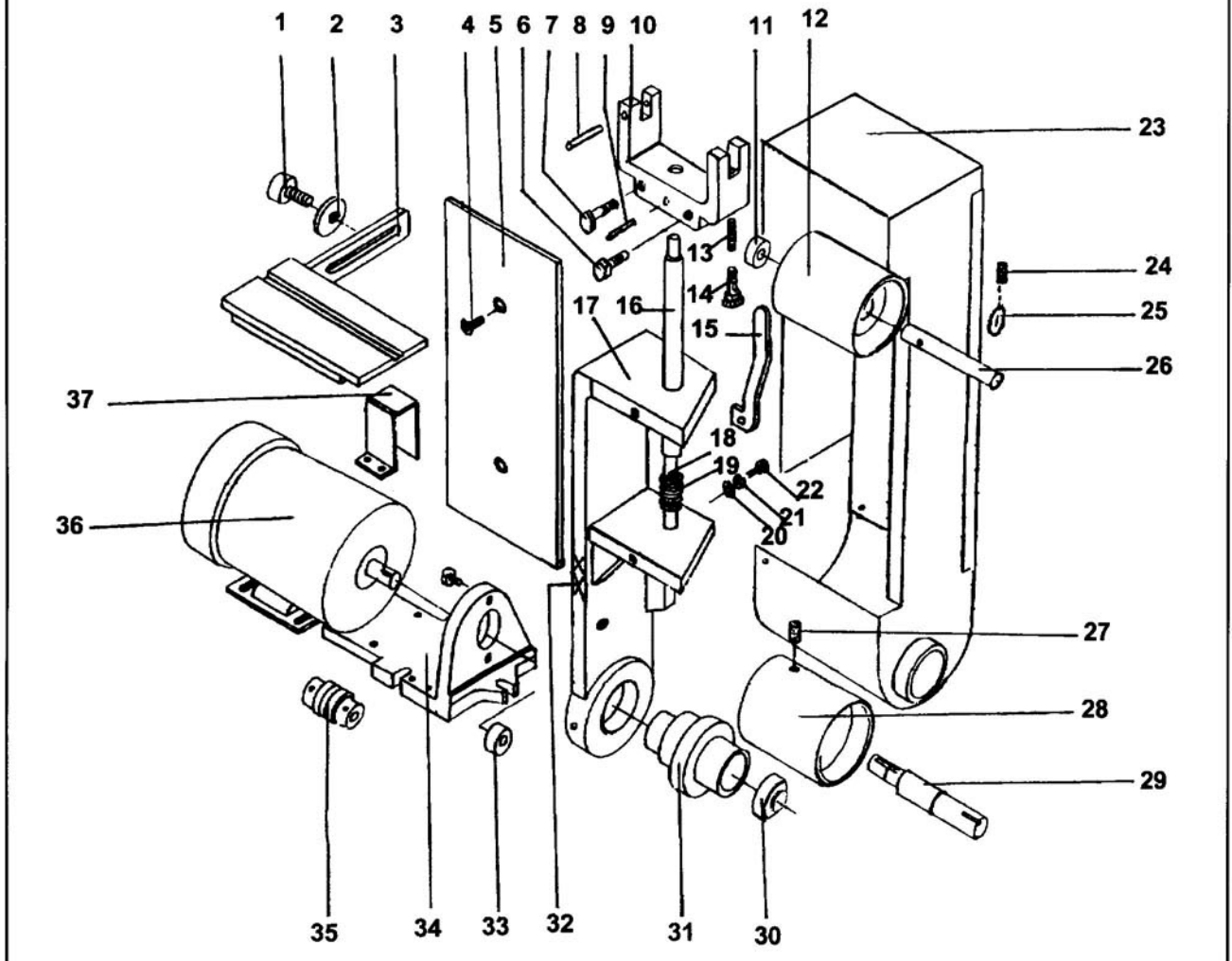
S6 SANDER PARTS DIAGRAM



NO.	PART NO.	DESCRIPTION	NO.	PART NO.	DESCRIPTION
1		1/2-13x1 S.H.C.S.	21		STOVER LOCK WASHER
2		1/2" WASHER	22		STOVER BOLT
3	829-012	WORK TABLE	23	342-069	OSHA GUARD
4		5/16-18x1 F.H.S.C.S.	24		SET SCREW
5	563-002	PLATEN	25	123-009	LOCKING COLLAR
6		1/4-20x2 CARRIAGE BOLT	26	701-019	IDLER SPINDLE
7		1/4-20x2 CARRIAGE BOLT	27		1/4-20x3/4 S.S.S.
8		3/16x2 ROLL PIN	28	560-015	DRIVE PULLEY
9		3/16x2 ROLL PIN	29	701-018	DRIVE SPINDLE
10	960-006	YOKE	30	044-001	K12 BEARING
11	044-001	K12 BEARING	31	386-013	BEARING HOUSING
12	560-016	IDLER PULLEY W/BRGS	32		SERIAL NUMBER
13	562-018	PIN	33	044-007	K10 BEARING
14	441-014	KNOB	34	050-020	BASE
15	455-003	TENSION LEVER		342-023	COUPLING GUARD
16	700-004	SHAFT	35	148-001	COUPLING ASSEMBLY
17	291-004	FRAME	36	486-006	35P35-5560 3HP, 1PH MOTOR
18		3/16x2 ROLL PIN	36	486-007	35P35-5561 3HP, 3PH MOTOR
19	697-024	TENSION SPRING		710-003	1PH REPLACEMENT SWITCH
20		STOVER WASHER		710-010	3PH REPLACEMENT SWITCH

KALAMAZOO INDUSTRIES, INC. 6856 East K Ave. Kalamazoo, MI 49048
269-382-2050 PH 269-382-0790 FAX www.kalamazooindustries.com

S6 SANDER PARTS DIAGRAM



NO.	PART NO.	DESCRIPTION	NO.	PART NO.	DESCRIPTION
1		1/2-13x1 S.H.C.S.	21		STOVER LOCK WASHER
2		1/2" WASHER	22		STOVER BOLT
3	829-012	WORK TABLE	23	342-069	OSHA GUARD
4		5/16-18x1 F.H.S.C.S.	24		SET SCREW
5	563-002	PLATEN	25	123-016	LOCKING COLLAR
6		1/4-20x2 CARRIAGE BOLT	26	701-019	IDLER SPINDLE
7		1/4-20x2 CARRIAGE BOLT	27		1/4-20x3/4 S.S.S.
8		3/16x2 ROLL PIN	28	560-015	DRIVE PULLEY
9		3/16x2 ROLL PIN	29	701-018	DRIVE SPINDLE
10	960-006	YOKE	30	044-001	K12 BEARING
11	044-001	K12 BEARING	31	386-013	BEARING HOUSING
12	560-016	IDLER PULLEY W/BRGS	32		SERIAL NUMBER
13	562-018	PIN	33	044-007	K10 BEARING
14	441-014	KNOB	34	050-020	BASE
15	455-003	TENSION LEVER		342-023	COUPLING GUARD
16	700-004	SHAFT	35	148-001	COUPLING ASSEMBLY
17	291-004	FRAME	36	486-006	35P35-5560 3HP, 1PH MOTOR
18		3/16x2 ROLL PIN	36	486-007	35P35-5561 3HP, 3PH MOTOR
19	697-024	TENSION SPRING		710-003	1PH REPLACEMENT SWITCH
20		STOVER WASHER		710-010	3PH REPLACEMENT SWITCH

KALAMAZOO INDUSTRIES, INC. 6856 East K Ave. Kalamazoo, MI 49048
269-382-2050 PH 269-382-0790 FAX www.kalamazooindustries.com

WARNING!
TO REDUCE THE RISK OF FIRE OR SHOCK HAZARD,
DO NOT EXPOSE THIS EQUIPMENT TO RAIN, ANY LIQUID OR MOISTURE.

INSPECTION

If these goods are damaged in transit, the DELIVERING TRANSPORTATION COMPANY is required by law to make notation of damages on the freight bill. If in your opinion, there may be concealed damage, they are required to make an inspection after goods are unpacked. Transportation rates are made in proportion to damage. Therefore, the carrier and NOT the shipper should be charged with any loss or damage. Any claim should be filed with the delivering Transportation Company. PLEASE DO NOT RETURN GOODS TO US WITHOUT OUR RGA NUMBER AND SHIPPING INSTRUCTIONS.

See back page for Return Policy and Warranty.

OPERATING INSTRUCTIONS

Belt tensioning: The 6"x48" belt sander has preset belt tension. The yoke assembly is spring loaded for constant belt tension. Tension lever (#15) tightens and loosens belt tension.

Belt changing: Open belt guard (#23) and locate the tension lever (#15) between the sander frame (#17). Pull down tension lever (#15) to compress tension spring and release belt tension. Remove and replace sanding belt. Be sure of correct belt rotation. Look inside belt for arrows showing you correct rotation. Lift tension lever (#15) to allow re-tensioning of the belt. Check tracking of belt with short on/off jogs of motor before letting the machine run. Spinning the belt by hand with power off will also check rough tracking before running machine. Be sure sanding belt stays centered on platen.

Belt tracking: Tracking the sanding belt is done with the tracking knob (#14) on yoke assembly. Tightening knob (#14) raises idler spindle and the belt moves toward the motor. Loosening the tracking knob drops the idler spindle (#26) and the sanding belt moves away from the motor. When the belt is centered on the platen (#5), tighten jam nut on tracking knob to lock in belt position.

Troubleshooting tracking problems:

1. Drive pulley lost its crown (curvature of pulley)
2. Sanding belts are not spliced square.
3. Upper pulley assembly not squared to platen. (Use carriage bolts to square yoke with platen)

Sanding head position: Sanding head can be positioned from vertical to horizontal with any angle in between. Loosen 5/16" socket head cap screws located above and below coupling (#35) in base (#34) while holding sander head firmly. Sanding head/frame is locked in position by squeezing bearing housing assembly against base. When desired position is reached, tighten 5/16" cap screws to lock in sanding head. CAUTION: SANDING HEAD IS VERY HEAVY. SUPPORT THE SANDING HEAD WHEN LOOSENING CAP SCREWS.

Platen: The platen is located behind sanding belt. The platen can be reversed and flipped to give four sanding areas. Normal wear will occur and platen will need to be rotated occasionally depending on usage. Remove sanding belt and platen screws (#4) to rotate platen to new position.

Note: Continuous sanding on the same side of platen will result in premature platen wear and belt breakage will occur. Move work piece to different areas of platen to extend platen belt life.

Worktable: The worktable has a slot for mounting fixtures or mitre gage. Also, two mounting holes are provided on the side of the frame (#17) to move table to different work heights.

Note: Keep worktable within 1/8" of sanding belt.

KALAMAZOO INDUSTRIES, INC. 6856 East K Ave. Kalamazoo, MI 49048
269-382-2050 PH 269-382-0790 FAX www.kalamazooindustries.com